

# CorePro LEDtube EM/ Mains T8

## CorePro LEDtube 1200mm 15.7W 840 T8 KSA

Philips CorePro LEDtubes are the quick and easy way to replace T8 fluorescent or other LED tubes with a fast pay back time. Not only does the Core range of LEDtubes require a low initial investment, but LED energy efficiency also delivers instant savings that you can bank on over a long and reliable lifetime. Plus, with the same lamp size and light distribution as fluorescent alternatives, you'll never know the difference. There are two ways to install these LED tubes: Rewire your existing fluorescent-based luminaires so the CorePro LEDtubes work directly on the Mains. Or simply change the fluorescent starter to an LED starter that can be used with your Electromagnetic ballasts.

### Warnings and Safety

- NOTE: The overall energy efficiency and light distribution of any installation that uses these lamps will be determined by the design of the installation.
- Installation must be done according to the installation diagrams provided with the lamp or available online. Installation must be done by a certified professional.

### Product data

General Information	
Cap-Base	G13
Nominal lifetime	30,000 hour(s)
Switching Cycle	50,000
Lighting Technology	LED
Light Technical	
Color Code	840 [CCT of 4000K]
Beam Angle (Nom)	240 degree(s)
Luminous Flux	1,850 lm

Color Designation	Cool White (CW)
Correlated Color Temperature (Nom)	4000 K
Luminous Efficacy (rated) (Nom)	117 lm/W
Color Consistency	<6
Color rendering index (CRI)	80
LLMF At End Of Nominal Lifetime (Nom)	70 %
Photobiological safety according to EN 62471 RGO	
Operating and Electrical	
Input Frequency	50 to 60 Hz

CorePro LEDtube EM/Mains T8

Power Consumption	15.7 W
Lamp Current (Nom)	75 mA
Wattage Equivalent	36 W
Starting Time (Nom)	0.5 s
Warm-up time to 60% light	0.5 s
Power Factor (Fraction)	0.92
Voltage (Nom)	220-240 V

Temperature

T-Case Maximum (Nom)	65 °C
----------------------	-------

Controls and Dimming

Dimmable	No
----------	----

Mechanical and Housing

Product Length	1,200 mm
Bulb Shape	T8
Net Weight (Piece)	0.180 kg

Approval and Application

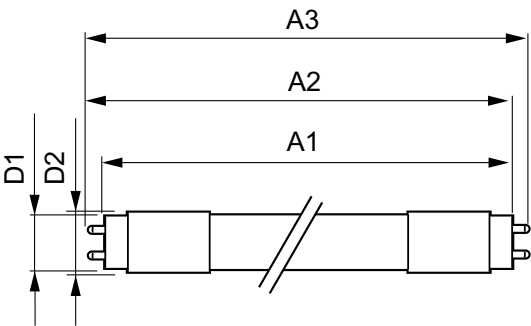
Energy Saving Product	Yes
-----------------------	-----

Approval Marks	RoHS compliance KEMA Keur certificate
EU RoHS compliant	Yes
Ambient temperature range	-20 to +45 °C

Product Data

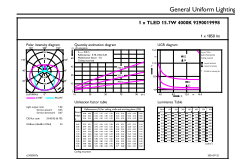
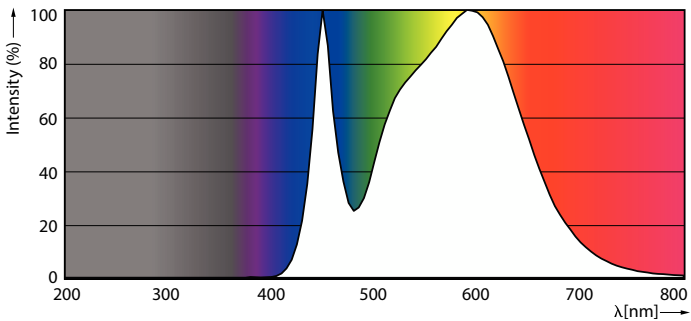
Order product name	CorePro LEDtube 1200mm 15.7W 840 T8 KSA
Full product name	CorePro LEDtube 1200mm 15.7W 840 T8 KSA
Full product code	872016934574400
Order code	929001999868
Material Nr. (12NC)	929001999868
Numerator - Quantity Per Pack	1
EAN/UPC - Product/Case	8720169345744
Numerator - Packs per outer box	25
EAN/UPC - Case	8720169345751

Dimensional drawing



Product	D1	D2	A1	A2	A3
CorePro LEDtube 1200mm 15.7W 840 T8 KSA	25.6 mm	27.8 mm	1,199.4 mm	1,205.3 mm	1,213.6 mm

Photometric data

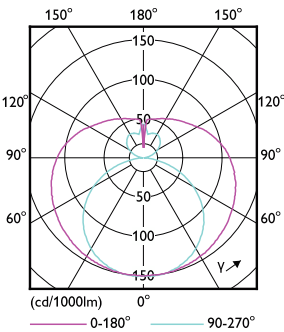


Spectral Power Distribution Colour - CorePro LEDtube 1200mm 15.7W 840 T8 KSA

General uniform lighting - CorePro LEDtube 1200mm 15.7W 840 T8 KSA

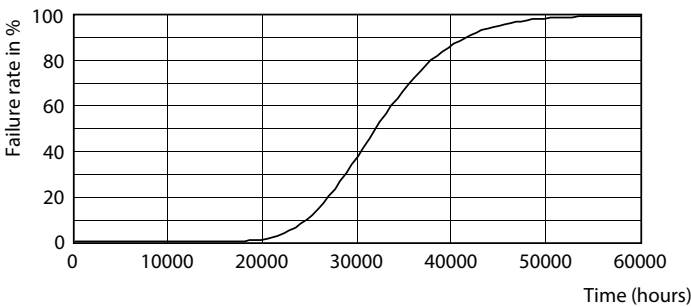
CorePro LEDtube EM/Mains T8

Photometric data

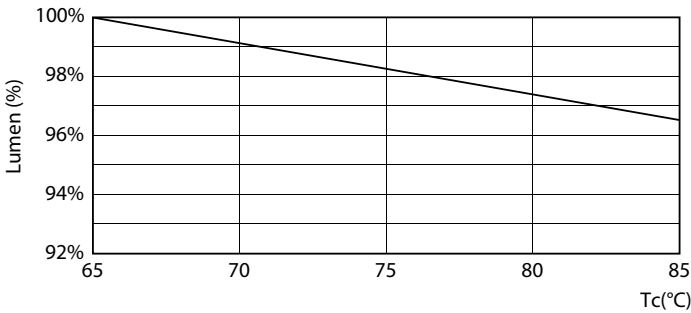


Light Distribution Diagram - CorePro LEDtube 1200mm 15.7W 840 T8 KSA

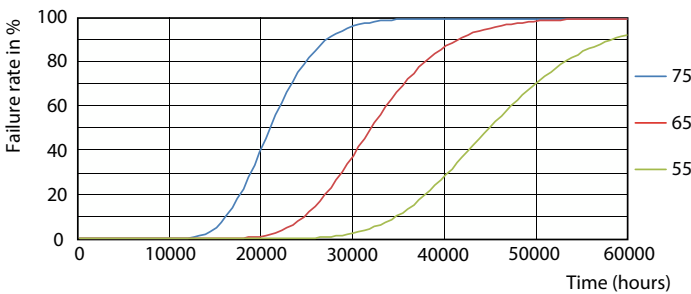
Lifetime



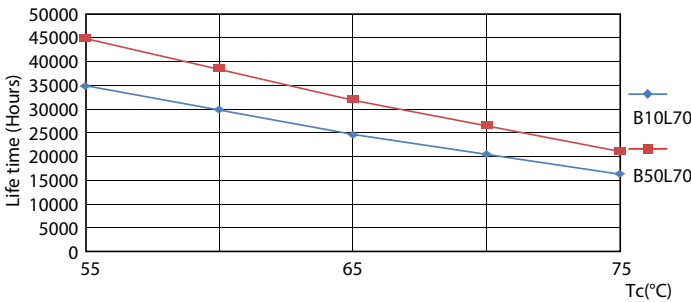
Life Expectancy Diagram



Lumen Maintenance Diagram - CorePro LEDtube 1200mm 15.7W 840 T8 KSA



FailureRate



LifetimeVsTc

CorePro LEDtube EM/Mains T8

Lifetime



Lumen Maintenance Diagram - CorePro LEDtube 1200mm 15.7W 840 T8 KSA

