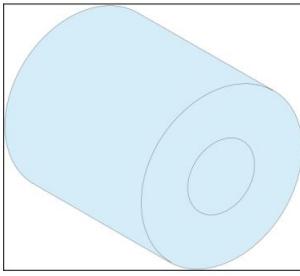


Product datasheet

Specifications



Kit for neutral bar, Linergy TB, 2 Installation spacers/neutral bar for Linergy TB

LVS04210

Main

Range	Linergy
Range Of Product	Linergy
Product Or Component Type	Kit for neutral bar
Product Name	Linergy TB
Accessory / Separate Part Category	Installation accessory
Range Compatibility	Linergy Linergy TB earthing bar PrismaSeT PrismaSeT G enclosure PrismaSeT PrismaSeT P cubicle
Provided Equipment	1 screw 1 insulating spacer

Complementary

Installation Description	Floor-standing enclosure - width 600 mm Wall-mounted enclosure - width 600 mm Floor-standing duct - width 300 mm Wall-mounted duct - width 300 mm Cubicle Cubicle duct
Quantity Per Set	Set of 1
Colour	Natural
Net Weight	0.02 kg

Packing Units

Unit Type Of Package 1	PCE
Number Of Units In Package 1	1
Package 1 Height	2.000 cm
Package 1 Width	2.500 cm
Package 1 Length	5.000 cm
Package 1 Weight	15.000 g
Unit Type Of Package 2	S02
Number Of Units In Package 2	100
Package 2 Height	15.000 cm
Package 2 Width	30.000 cm
Package 2 Length	40.000 cm
Package 2 Weight	1.733 kg

Unit Type Of Package 3	P12
Number Of Units In Package 3	800
Package 3 Height	29.000 cm
Package 3 Width	80.000 cm
Package 3 Length	120.000 cm
Package 3 Weight	25.000 kg

Sustainability

Green Premium™ label is Schneider Electric's commitment to delivering products with best-in-class environmental performance. Green Premium promises compliance with the latest regulations, transparency on environmental impacts, as well as circular and low-CO₂ products.

Guide to assessing product sustainability is a white paper that clarifies global eco-label standards and how to interpret environmental declarations.

[Learn more about Green Premium >](#)

[Guide to assess a product's sustainability >](#)



Transparency RoHS/REACH

Well-being performance

✓ Reach Free Of Svhc

✓ Toxic Heavy Metal Free

✓ Mercury Free

✓ Rohs Exemption Information [Yes](#)

✓ Pvc Free

Certifications & Standards

Reach Regulation

[REACH Declaration](#)

Eu Rohs Directive

Compliant

[EU RoHS Declaration](#)

China Rohs Regulation

[China RoHS declaration](#)

Pro-active China RoHS declaration (out of China RoHS legal scope)

Environmental Disclosure

[Product Environmental Profile](#)

Circularity Profile

No need of specific recycling operations