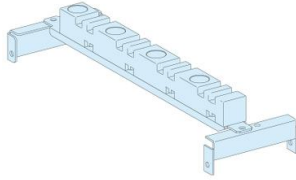


# Product datasheet

Specifications



## Busbar support, Linergy BS, bottom lateral vertical 5/10 busbar support Linergy LGYE/BS

LVS04663

### Main

Range	Linergy
Range Of Product	Linergy
Product Or Component Type	Busbar support
Product Name	Linergy BS
Range Compatibility	Linergy Linergy LGYE busbar Linergy Linergy BS busbar PrismaSeT PrismaSeT P enclosure
Product Compatibility	Busbar support

### Complementary

Cubicle-Device Connection	Linergy BS lateral busbar Linergy LGYE lateral busbar
Installation Description	Cubicle duct - width 150 mm
Quantity Per Set	Set of 1
Net Weight	0.8 kg

### Environment

Standards	IEC 61439-1 IEC 61439-2
Product Certifications	ASTA

### Packing Units

Unit Type Of Package 1	PCE
Number Of Units In Package 1	1
Package 1 Height	3 cm
Package 1 Width	11 cm
Package 1 Length	37 cm
Package 1 Weight	800 g
Unit Type Of Package 2	S04
Number Of Units In Package 2	25
Package 2 Height	30 cm
Package 2 Width	40 cm
Package 2 Length	60 cm
Package 2 Weight	20.9 kg

<b>Unit Type Of Package 3</b>	P12
<b>Number Of Units In Package 3</b>	200
<b>Package 3 Height</b>	72 cm
<b>Package 3 Width</b>	80 cm
<b>Package 3 Length</b>	120 cm
<b>Package 3 Weight</b>	179 kg

## Sustainability

**Green Premium™ label** is Schneider Electric's commitment to delivering products with best-in-class environmental performance. Green Premium promises compliance with the latest regulations, transparency on environmental impacts, as well as circular and low-CO<sub>2</sub> products.

**Guide to assessing product sustainability** is a white paper that clarifies global eco-label standards and how to interpret environmental declarations.

[Learn more about Green Premium >](#)

[Guide to assess a product's sustainability >](#)



Transparency RoHS/REACH

## Well-being performance

✓ Reach Free Of Svhc

✓ Toxic Heavy Metal Free

✓ Mercury Free

✓ Rohs Exemption Information [Yes](#)

✓ Pvc Free

✓ Halogen Free Plastic Parts Product

## Certifications & Standards

**Reach Regulation**

[REACH Declaration](#)

**Eu Rohs Directive**

Pro-active compliance (Product out of EU RoHS legal scope)

[EU RoHS Declaration](#)

**China Rohs Regulation**

[China RoHS declaration](#)

Pro-active China RoHS declaration (out of China RoHS legal scope)

**Environmental Disclosure**

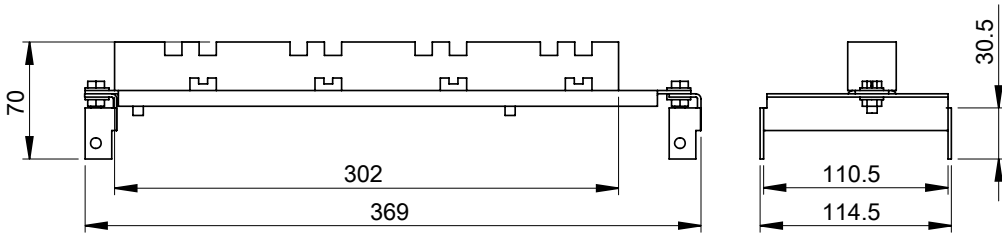
[Product Environmental Profile](#)

**Circularity Profile**

No need of specific recycling operations

Dimensions

---



- All dimensions are approximate and are in mm.
- Also see technical documentation.