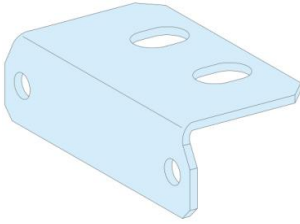


Product datasheet

Specifications



PE support, PrismaSeT P, 2 supports for one horizontal PE, set of 2

LVS04667

Main

Range	Linergy
Range Of Product	Linergy
Product Or Component Type	PE support
Product Name	Linergy TB
Range Compatibility	Linergy Linergy TB terminal block PrismaSeT PrismaSeT P enclosure

Complementary

Cubicle-Device Connection	Linergy BS vertical busbar
Installation Description	Cubicle
Quantity Per Set	Set of 2
Net Weight	0.14 kg

Environment

Standards	IEC 61439-1 IEC 61439-2
Product Certifications	ASTA

Packing Units

Unit Type Of Package 1	PCE
Number Of Units In Package 1	1
Package 1 Height	2.3 cm
Package 1 Width	4.1 cm
Package 1 Length	7.6 cm
Package 1 Weight	135 g
Unit Type Of Package 2	S02
Number Of Units In Package 2	20
Package 2 Height	15 cm
Package 2 Width	30 cm
Package 2 Length	40 cm
Package 2 Weight	2.996 kg
Unit Type Of Package 3	P12
Number Of Units In Package 3	320

Package 3 Height	42 cm
Package 3 Width	80 cm
Package 3 Length	120 cm
Package 3 Weight	60.5 kg

Sustainability

Green Premium™ label is Schneider Electric's commitment to delivering products with best-in-class environmental performance. Green Premium promises compliance with the latest regulations, transparency on environmental impacts, as well as circular and low-CO₂ products.

Guide to assessing product sustainability is a white paper that clarifies global eco-label standards and how to interpret environmental declarations.

[Learn more about Green Premium >](#)

[Guide to assess a product's sustainability >](#)



Transparency RoHS/REACH

Well-being performance

✓ Reach Free Of Svhc

✓ Toxic Heavy Metal Free

✓ Mercury Free

✓ Rohs Exemption Information [Yes](#)

✓ Pvc Free

✓ Halogen Free Plastic Parts Product

Certifications & Standards

Reach Regulation

[REACH Declaration](#)

Eu Rohs Directive

Pro-active compliance (Product out of EU RoHS legal scope)

[EU RoHS Declaration](#)

China Rohs Regulation

[China RoHS declaration](#)

Pro-active China RoHS declaration (out of China RoHS legal scope)

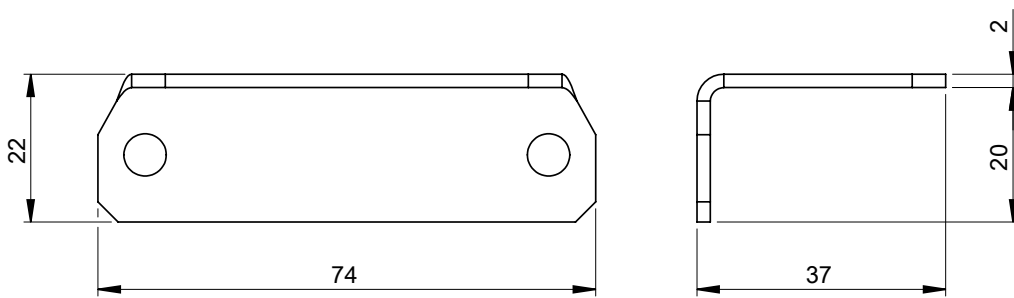
Environmental Disclosure

[Product Environmental Profile](#)

Circularity Profile

No need of specific recycling operations

Dimensions



- All dimensions are approximate and are in mm.
- Also see technical documentation.